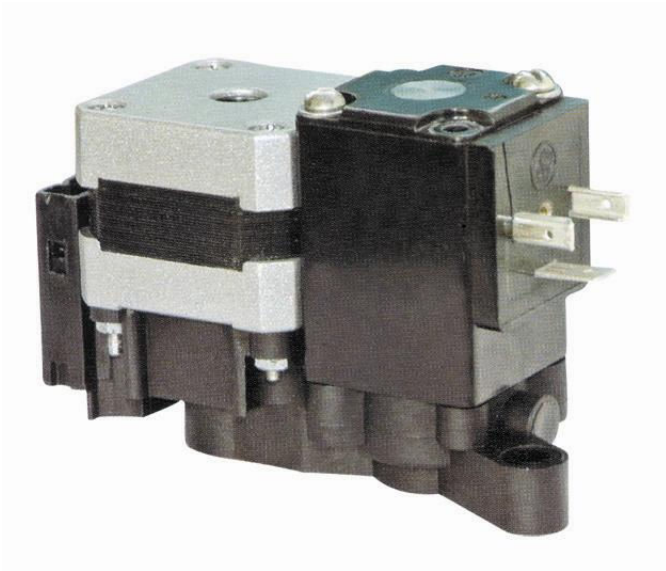


Please find below the "Delta & Omni" Parts available. You will find the part numbers next to the illustration. If you would like to inquire please use the e-mail link provided. Company Info and Country (currency) required. To order: [sales@streiter.ca](mailto:sales@streiter.ca)



Part #: STR-121

Picanol DELTA/OMNI relay solenoid valves



Part #: STR-122

Picanol DELTA/OMNI main solenoid valves



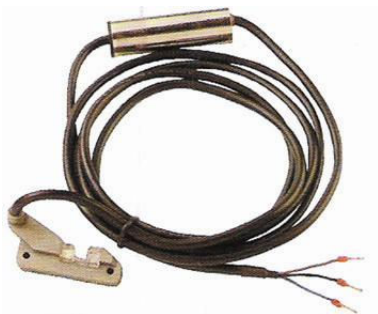
Part #: STR-127

Picanol DELTA/OMNI IRO2231 weft storage pin



Part #: STR-097

Feeler used in PICANOL OMNI NO: BE305748 BE302724



Part #: STR-096

Feeler used in PICANOL DAT, OMNI, OMNIPLUS NO:BE83038



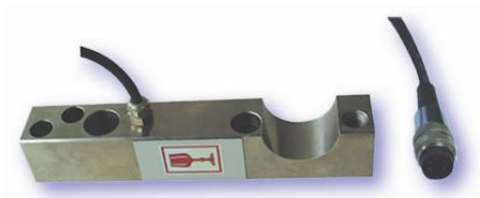
Part #: STR-094

Feeler used in PIKANOL DAT, OMNI, OMNIPLUS NO: BE155133, BE153278



Part #: STR-069

PAT DELTA OMNI OMNIPLUS OMNIPLUS 800 : BE82968



Part #: STR-059-L

Tension sensor used in PIKANOL DAT, OMNI, OMNIPLUS air-jet looms and GAMMA rapier looms : BE152412



Part #: STR-054

Used in the 9407, 2231 weft-storage devices of PIKANOL DAT, OMNI, OMNIPLUS air-jet looms : BE310354 BE310858 BE311069



Part #: STR-053

Setting out sensor used in the 9407, 2231 weft-storage devices of PIKANOL DAT, OMNI, and OMNIPLUS air-jet looms: BE310689 BE310981 BE310858



Part #: STR-052-2

Used in weft signal transmission of PIKANOL DAT OMNI, OMNIPLUS: BE301814 BE306839



Part #: STR-052-1

Used in weft signal transmission of PIKANOL DAT, OMNI, OMNIPLUS : BE151312



Part #: STR-039

Photoelectric feeler used in PIKANOL DAT, OMNI, and OMNIPLUS

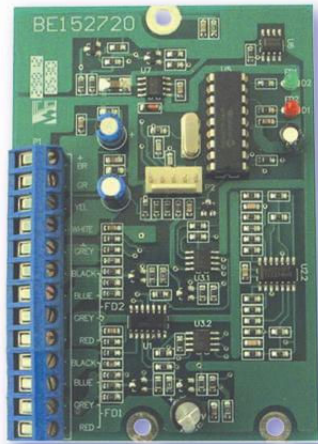
air-jet looms : BE15190 BE154883



Part #: STR-037

Planet leno-selvedge detector used in PIKANOL DAT, OMNI,

OMNIPLUS air-jet looms : BE151793 BE152624



Part #: STR-088

BE152720

Feeler board used in PICANOL DAT, OMNI, and OMNIPLUS air-jet looms



Part #: STR-077

SKM200GAL123DKLD110GAH123DKL

Used in PICANOL DAT, OMNI, OMNIPLUS air-jet looms



Part #: STR-069

PAT, DELTA, OMNI, OMNIPLUS PLUS 800 : BE82968



Part #: STR-061

Cutter motor



Motor

Part #: STR-060